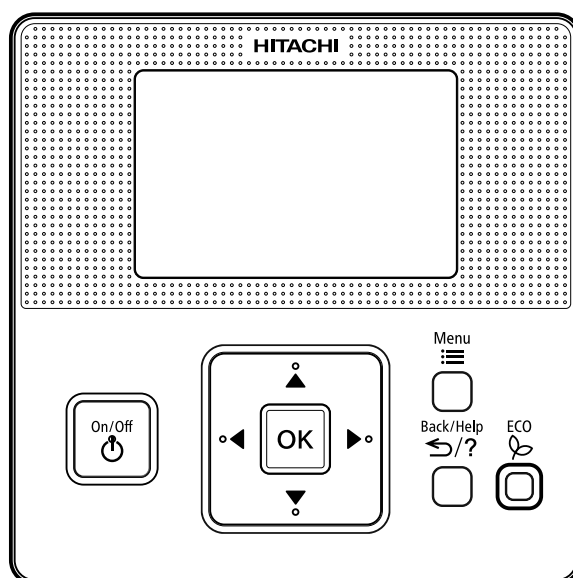


# HITACHI

## WIRED REMOTE CONTROLLER INSTALLATION MANUAL

MODEL  
SPX-WKT3





### CONTENTS

1. SAFETY PRECAUTIONS	2
2. INSTALLATION WORK	2
3. NAMES AND FUNCTIONS OF REMOTE CONTROLLER	4
4. ADJUSTING DATE/TIME	5
5. LANGUAGE SETTING	5
6. SCREEN DISPLAY SETTING	6
7. THERMISTOR SELECTION	6
8. DISPLAY ROOM TEMPERATURE (SERVICE MENU)	7
9. CONTACT INFORMATION REGISTRATION (SERVICE MENU)	7
10. LOUVER SETTING (CEILING CASSETE ONLY : FUNCTION MENU)	8

## 1. SAFETY PRECAUTIONS

Also see installation manual attached to the indoor unit.

- Please read the “Safety Precaution” carefully before operating the unit to ensure correct usage of the unit.
- Pay special attention to signs of “  **Warning**” and “  **Caution**”. The “Warning” section contains matters which, if not observed strictly, may cause death or serious injury. The “Caution” section contains matters which may result in serious consequences if not observed properly. Please observe all instructions strictly to ensure safety.
- Be sure that the unit operates in proper condition after installation. Explain to customer the proper operation and maintenance of the unit as described in the user' s guide. Ask a customer to keep this installation manual together with the instruction manual.

### **WARNING**

- Please request your sales agent or qualified technician to install your remote controller. Short circuit or fire may occur if you do the installation work yourself.
- Do not pour water into the remote controller. This product is equipped with electrical parts. If poured, it will cause a serious electrical shock.
- Please observe the installation stated in the installation manual during the process of installation. Improper installation may cause electric shock and fire.
- Please contact your agent for maintenance. Improper self maintenance may cause electric shock and fire.
- Please contact your agent if you need to remove and reinstall the remote controller. Electric shock or fire may occur if you remove and reinstall the remote controller yourself improperly.
- Make sure that the remote controller is mounted at locations which is able to provide full support to the weight of the remote controller. If not, the remote controller may collapse and impose danger.
- Use specified cables to connect between indoor unit and remote controller. Selecting incorrect cables may lead to fire or electrical shock.
- Should abnormal situation arise (like burning smell), please stop operating the unit and turn off the circuit breaker. Contact your agent. Fault, short circuit or fire may occur if you continue to operate the unit under abnormal situation.
- Always perform installation work with turn off the circuit breaker. Touch with energized electric parts causes an electric shock.
- The sales agent and qualified technician shall comply with local regulations or standards for the safety.

### **CAUTION**

- Do not install the remote controller and cable at such places as;
  - Where there is oil vapor and the oil is dispersed.
  - Where the hot springs are near (in a sulfuric environment).
  - Where generation, flowing, staying or leaking of flammable gas is detected.
  - Where the sea is near (in the salty environment).
  - An acid or alkaline environment.
- Do not install the indoor unit, outdoor unit, remote controller and cable within approximately 3 meters from strong electromagnetic wave radiators such as medical equipment. In case that the remote controller is installed in a place where there is electromagnetic wave radiation, shield the remote controller and cables by covering with the steel box and running the cable through the metal conduit tube.
- To avoid noise interference, please place the indoor unit and remote controller at least 1m away from TV/radio.
- This appliance is not to be used by children or persons with reduced physical, sensory or mental capabilities, or lack of experience and knowledge, unless they have been given supervision or instruction. Children must be supervised not to play with the appliance.

## 2. INSTALLATION WORK

### 2.1 SELECTION OF INSTALLATION PLACE

Select a suitable place for handling and determine the installation place of the controller with the customer’s acceptance.

Do not install the controller at such places as:

- Where children can touch.
- Where the air from the air conditioner is directly discharged.



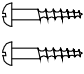


Especially in case that a Remote Controller thermostat is used, select the installation place in consideration with the following points:

- Where the average room temperature is detectable.
- Where the thermostat is not exposed directly to the sun.
- Where there is no source of heat.
- Where the thermostat is not affected with the outdoor air by opening and closing doors.

Prior to the installation work, ensure that foundation is flat, level and sufficiently strong and then fix the unit securely. If the foundation is not strong enough, it may lead to injuries caused by falling of the product, electrical shock or fire.

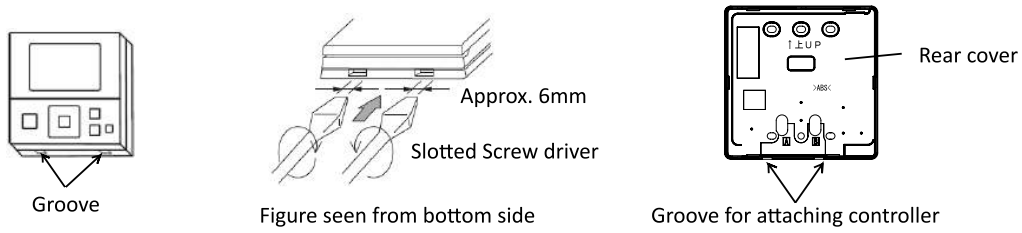
### 2.2 BEFORE INSTALLATION

Check the contents and the number of the accessories in the packing.

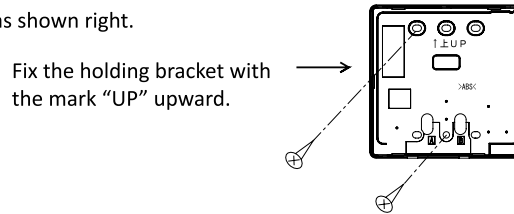
				
Remote controller for operation control	Connecting cable	2 screws M4x16L for fixing the holding bracket onto the wall	Manual CD	Installation manual (This manual)

### 2.3 INSTALLATION PROCEDURES

1 Insert the edge of the slotted screwdriver into the groove at the bottom of the holding bracket, push and then remove the remote controller from holding bracket.

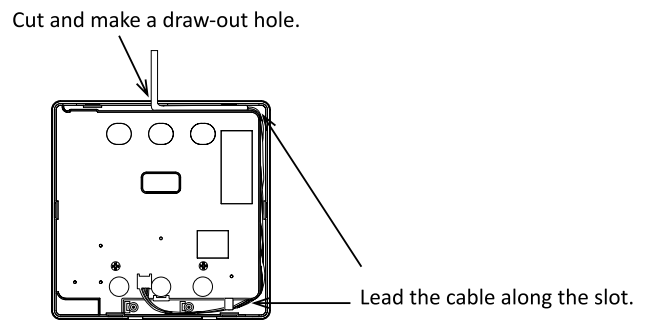


2 Attach the remote controller to holding bracket as follows.  
Fix the holding bracket onto wall with screws(accessory) as shown right.

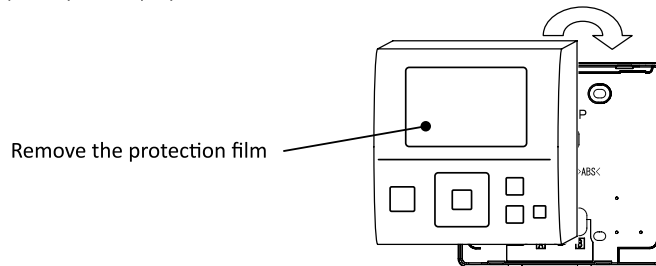


3 Cut the top of front cover and make a draw-out hole.  
Lead the cable along the slot.

\*Extended cable is prepared as an option. (SPX-WKT5M : 5m)  
This cable can add until 2 pcs.



4 Insert the hooks of the controller to the holes on the top of the holding bracket. Push the lower part toward the holding bracket. When the click sound is heard, the remote controller is attached to the holding bracket and the mounting work is finished. Be careful not to pinch the cable when attaching it. Remove the protection film from the liquid crystal display.

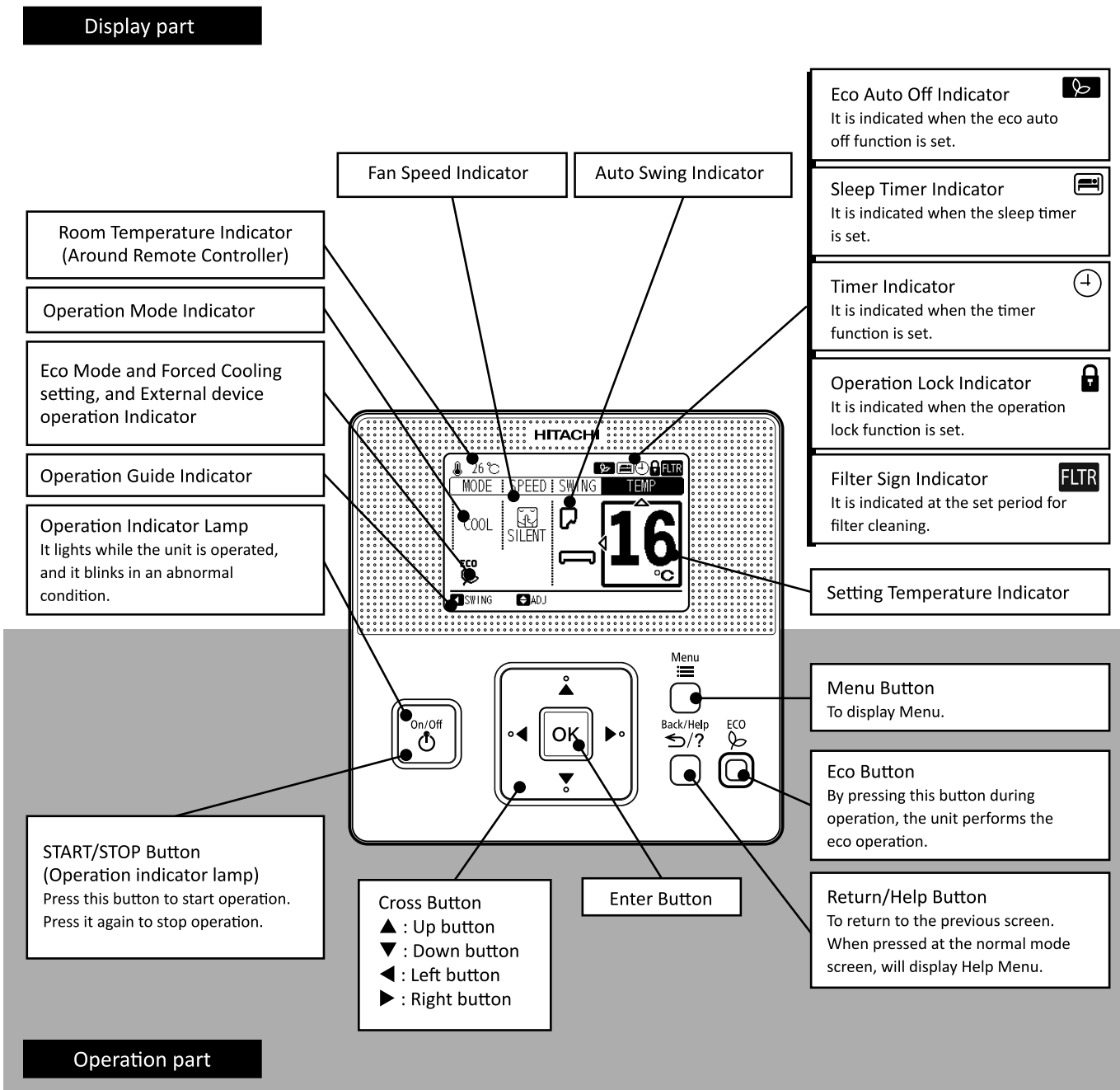


#### **⚠ CAUTION**

Pay attention so that the cable may not be bitten. It may cause a faulty operation.

### 3. NAMES AND FUNCTIONS OF REMOTE CONTROLLER

The figure below shows all the indications for reference. The actual display during operation is different.



#### NOTE


- Do NOT press the buttons hard or press with sharply pointed material such as a ball point pen. The operation part of the remote controller may be damaged.
- Make sure that the buttons are pressed softly with fingers.

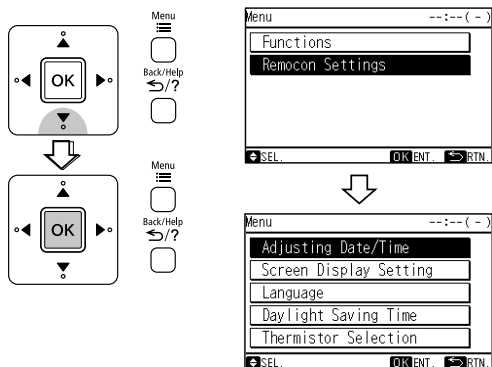
## 4. ADJUSTING DATE/TIME

This function is used to adjust the date and time.

Periodic time setting is recommended. (Clock accuracy : Difference within +/-5 seconds by month).

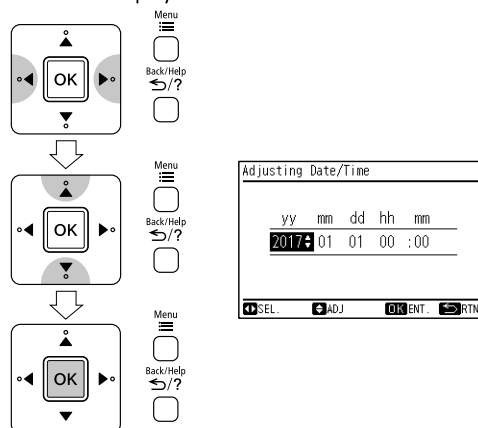
As for this remote controller, the clock can work up to 72 hours when power failure occurs. Reset the date and time if the remote controller remains without power supply for longer than 72 hours or main power is OFF for long time.

- 1 Press . Select "Remocon Settings" from the menu and press "OK".
- 2 Select "Adjusting Date/Time" from the menu and press "OK".

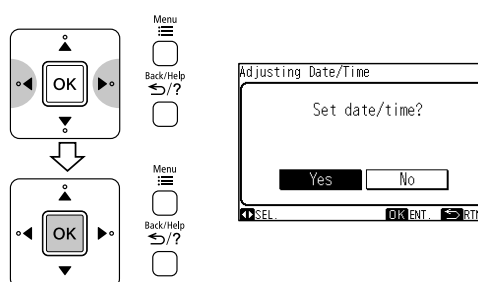


- 3 Press "<" or ">" and select "yy/mm/dd/hh/mm".
- 4 Press "△" or "▽" to change the setting. Press or keep "△" or "▽" to adjust numbers.

- 5 After the setting is completed, press "OK" and the confirmation screen will be displayed.



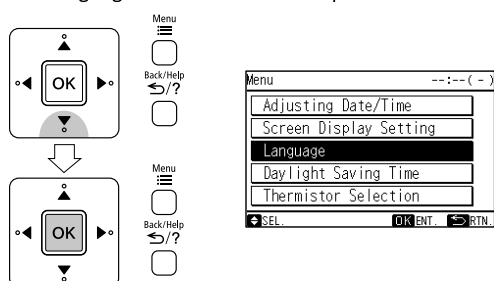
- 6 Select "Yes" by pressing "<" or ">" and press "OK". The setting will be confirmed and the screen will return to the normal mode.



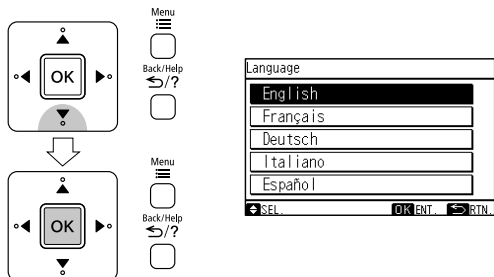
## 5. LANGUAGE SETTING

This function is used to change the displayed language.

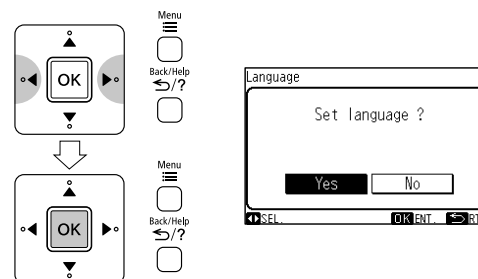
- 1 Select "Language" from the menu and press "OK".



- 2 Press "△" or "▽" to select the language and press "OK". The confirmation screen will be displayed.



- 3 Select "Yes" by pressing "<" or ">" and press "OK". The setting will be confirmed and the screen will return to the normal mode.



### NOTE

If displayed language is changed, "Contact information" will be deleted.

## 6. SCREEN DISPLAY SETTING

This function is used to change the display adjustment.

### ◆ Function

#### • Time Format :

To change the time form to 12 hour 24 hour.

#### • Brightness :

To adjust the brightness of backlight.

#### • Back light :

To change the time (5, 15 or 30 seconds) between ON and OFF of backlight.

#### • Contrast :

To adjust the degree of difference between light and dark parts of LCD.

#### • On/Off lamp (Operation indicator lamp Brightness) :

To adjust the brightness of operation indicator.

#### • Brightness :

Press "<" or ">" and the brightness of backlight is changed.

#### • Back light :

The display backlight is OFF after the specified time interval of inactivity (no input from touch screen).

The backlight off time interval can be selected as follows;

5 Seconds <--> 15 Seconds <--> 30 Seconds

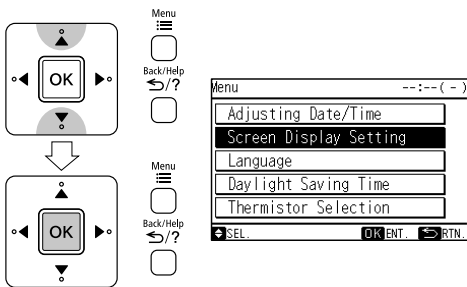
#### • Contrast :

Press "<" or ">" and the degree of difference between light and dark parts of LCD is changed.

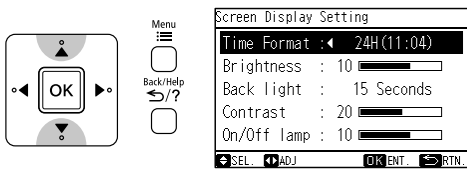
#### • On/Off lamp :

Press "<" or ">" and the brightness of operation indicator lamp is changed.

1 Select "Screen Display Setting" from the menu and press "OK".



2 Select the setting item by pressing "<" or ">". The indication is changed in order of "Time Format", "Brightness", "Back light", "Contrast" and "On/Off lamp".



3 Press "<" or ">" and set the display.

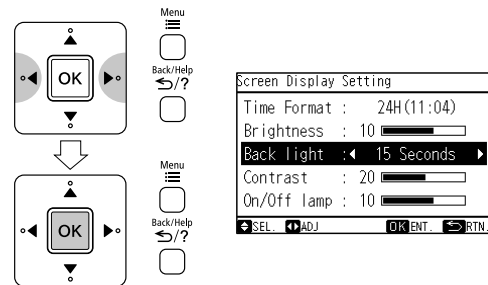
#### • Time Format :

The time form is changed as follows;

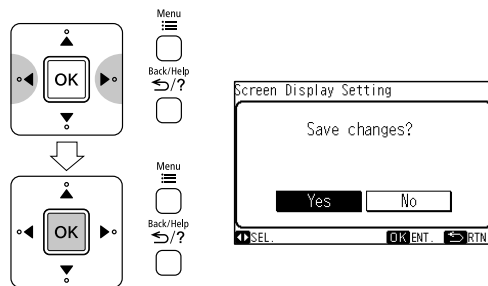
12 Hour <--> 24 Hour.

After the setting is completed, press "OK".

The confirmation screen will be displayed.



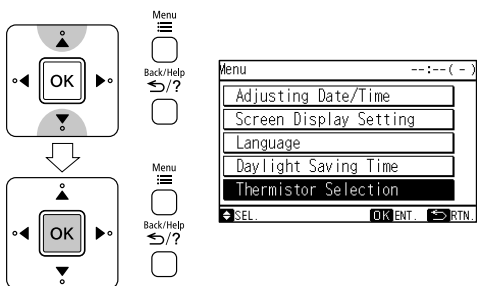
4 Select "Yes" by pressing "<" or ">" and press "OK". The setting will be confirmed and the screen will return to the normal mode.



## 7. THERMISTOR SELECTION

This function is used to select the controlling thermistor.

1 Select "Thermistor Selection" from the menu and press "OK".

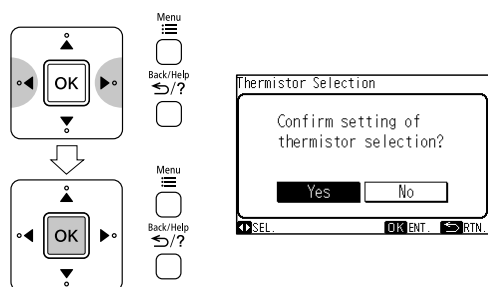


2 By repeatedly pressing "<" or ">", the indication is changed in order of IU <--> Remote control <--> Average.

Select the controlling thermistor and press "OK".

The confirmation screen will be displayed.

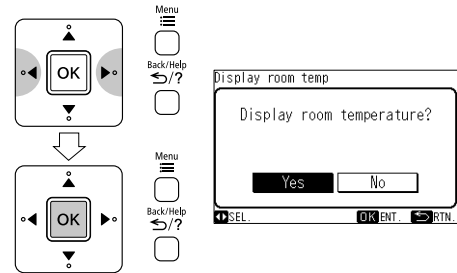
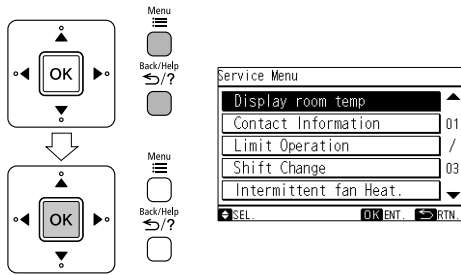
3 Select "Yes" by pressing "<" or ">" and press "OK". The setting will be confirmed and the screen will return to the normal mode.



## 8. DISPLAY ROOM TEMPERATURE (SERVICE MENU)

Room temperature(around remote controller) can be displayed

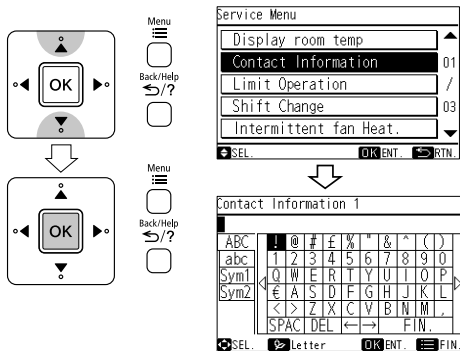
- Press and hold **Menu** and **Back/Help** simultaneously for at least 3 seconds during the normal mode (when unit is not operated). The service menu will be displayed. Select "Display room temp" from the service menu and press "OK". The confirmation screen will be displayed.
- Select "Yes" by pressing "<" or ">" and press "OK". The setting will be confirmed and the screen will return to the normal mode.



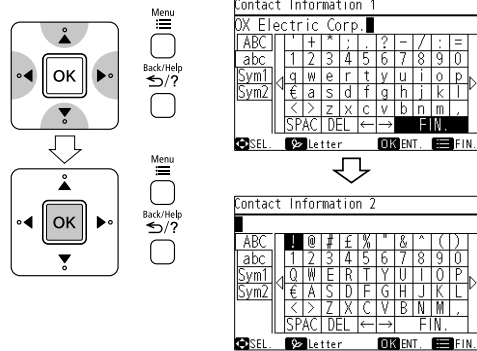
## 9. CONTACT INFORMATION REGISTRATION (SERVICE MENU)

Contact information can be registered from "Contact information".

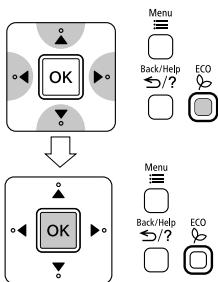
- Select "Contact information" from the service menu and press "OK". The contact information 1 will be displayed.



- Select "FIN." and press "OK" (or simply press **Menu**). "Contact information 2" will be displayed.

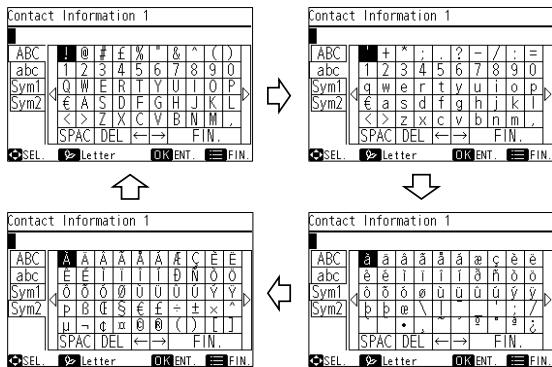
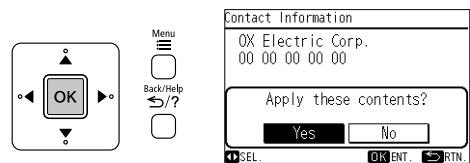


- Press **ECO** to change font type.
- Press "△▽◀▶" to select letter.
- Press "OK" to confirm the letter. (Max.: 28 letters)



- Repeat (3)-(5) to register the contact information 2. Select "FIN." and press "OK", the confirmation screen will be displayed. (Also press **Menu** and the confirmation screen will be displayed.)

- Select "Yes" and press "OK". The service menu will be displayed after setting is confirmed. If "No" is pressed, the screen will return to (3).



# 10. LOUVER SETTING (CEILING CASSETE ONLY : FUNCTION MENU)

## 10.1 Individual louver setting

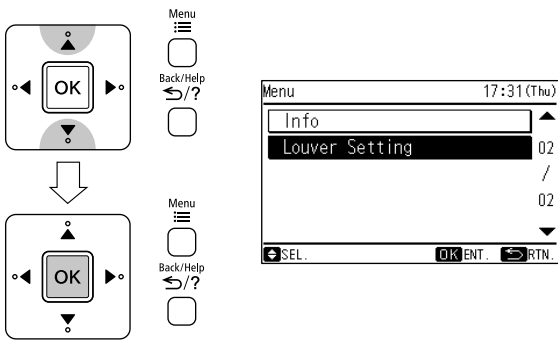
### 10.1.1 Setting

The each louver angle can be set individually as following procedure.

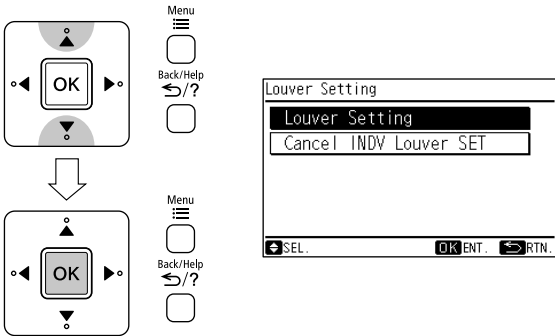
**NOTE**

- This function cannot be set when the unit is stopped.
- This function will not be available if the receiver kit is used.
- The unit operation will be "Thermo Off" while this function is being set. (After the setting is completed, the unit operation will be back to normal.)
- As for "during preheating" and "during defrosting", all the louver angles will be fixed at horizontal position automatically even when this function is activated.

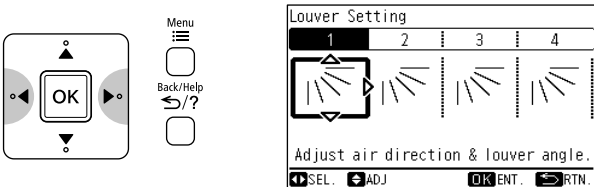
1 Press **Menu** Select "Functions" from the menu and press "OK".  
 Select "Louver Setting" from the menu and press "OK".  
 The individual louver setting menu will be displayed.



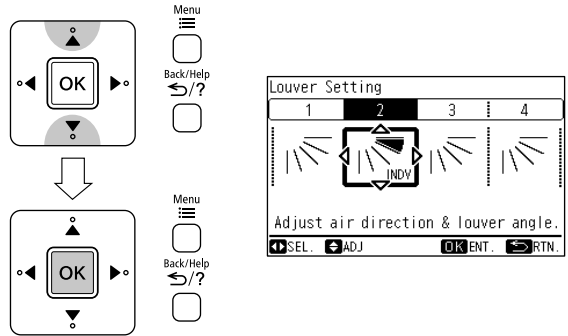
2 Select "Louver Setting" from the individual louver setting menu and press "OK".



3 Press "◀" or "▶" and select the louver from 1 to 4. The selected louver is opened and the other louvers are closed.



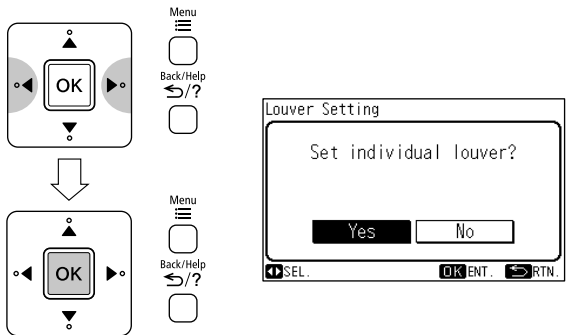
4 Select the louver angle by pressing "△" or "▽" and press "OK".



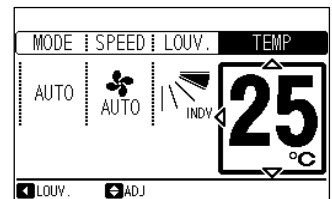
The louver angle will be changed as follows.



5 Select "Yes" by pressing "◀" or "▶" and press "OK". The setting will be confirmed and the screen will return to the normal mode.



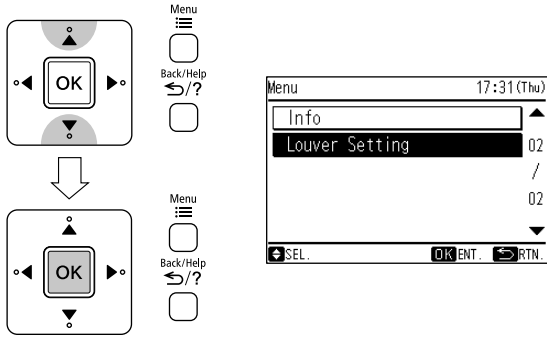
6 Ensure that "INDV" is tuned on at the air flow section on the normal display.



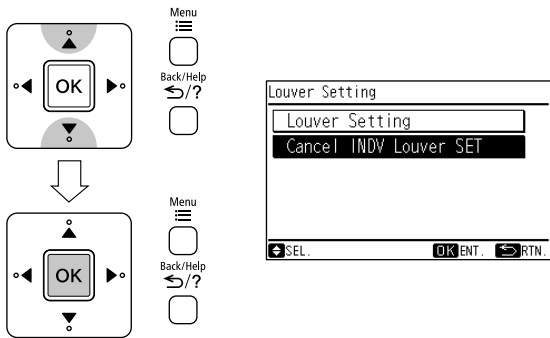


10.1.2 Cancellation of louver setting

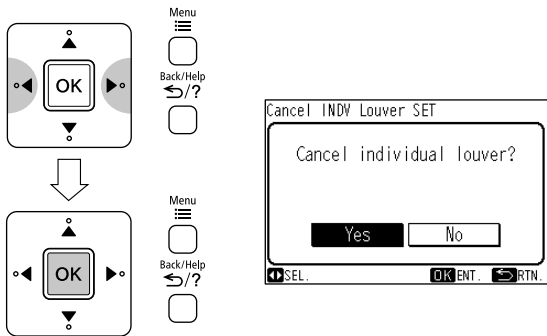
1 Select "Louver Setting" from the menu and press "OK".



2 Select "Cancel INDV Louver SET" from the individual louver set and press "OK".



3 Select "Yes" by pressing "<" or ">" and press "OK". The individual louver setting will be cancelled and the screen will return to the normal mode.



NOTE

- All the individual louver setting will be cancelled.

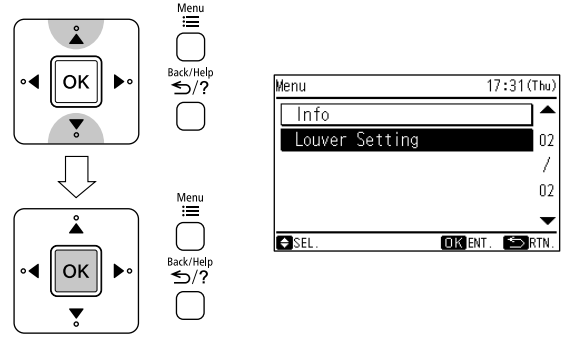
10.2 Setting of individual louver outlet position

This setting can be changed an individual louver outlet position. (louver outlet No.1 to 4). No.1 to 4 any louver outlet can be changed No.1 position as following procedure.

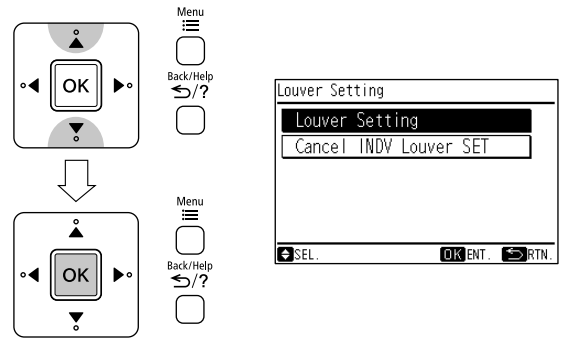
NOTE

- This function cannot be set when the unit is stopped.
- This function will not be available if the receiver kit is used.
- The unit operation will be "Thermo Off" while this function is being set. (After the setting is completed, the unit operation will be back to normal.)

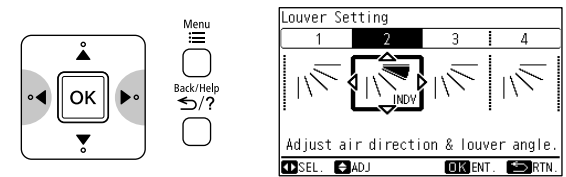
1 Press . Select "Functions" from the menu and press "OK". Select "Louver Setting" from the menu and press "OK". The individual louver setting menu will be displayed.



2 Select "Louver Setting" from the individual louver setting menu and press "OK".



3 Press "<" or ">" and select the louver from 1 to 4. The selected louver is opened and the other louvers are closed.



4 Press while is pressed. The confirmation screen will be displayed.

Select "Yes" and press "OK". (3) will be displayed after the setting change is confirmed. The louver selected at (3) will be set as "No.1" and the other louver No. will be changed clockwise automatically as shown in the figure. Then the screen will return to (3).

If "No" selected and "OK" is pressed, the screen will return to (3).

